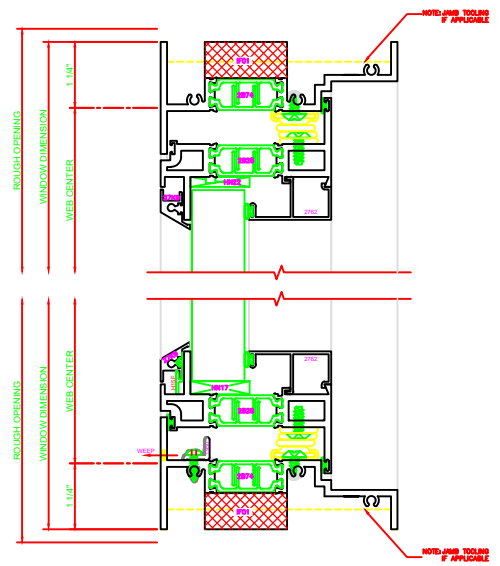


130 HEAD
SERIES: 450G
CASEMENT IN
4-BAR ARMS

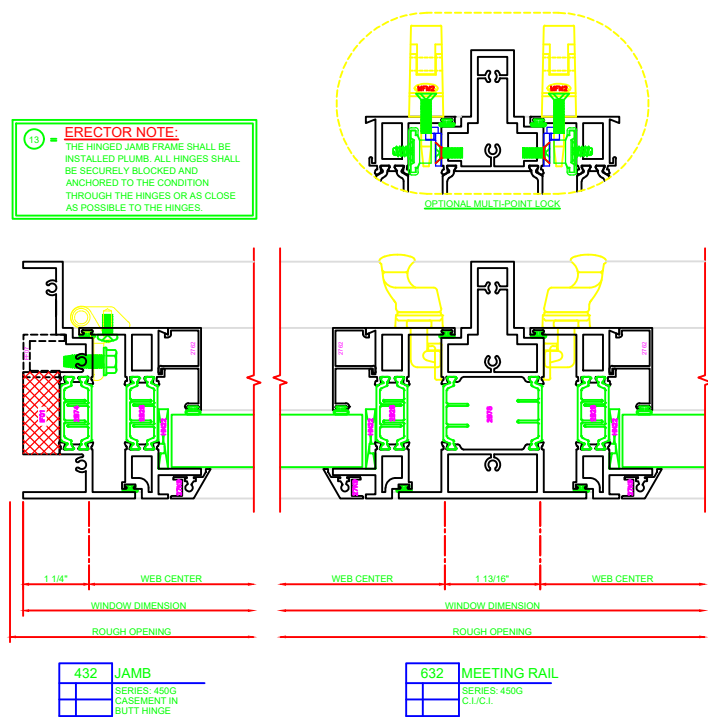
230 SILL
SERIES: 450G
CASEMENT IN
4-BAR ARMS

430 JAMB
SERIES: 450G
CASEMENT IN
4-BAR ARMS

632 MEETING RAIL
SERIES: 450G
C.I./C.I.



4-BAR ARMS BUTT HINGE



13 ERECTOR NOTE:
THE HINGED JAMB FRAME SHALL BE
INSTALLED PLUMB. ALL HINGES SHALL
BE SECURELY BLOCKED AND
ANCHORED TO THE CONDITION
THROUGH THE HINGES OR AS CLOSE
AS POSSIBLE TO THE HINGES.

131 HEAD
SERIES: 450G
CASEMENT IN
BUTT HINGE

231 SILL
SERIES: 450G
CASEMENT IN
BUTT HINGE

432 JAMB
SERIES: 450G
CASEMENT IN
BUTT HINGE

632 MEETING RAIL
SERIES: 450G
C.I./C.I.

